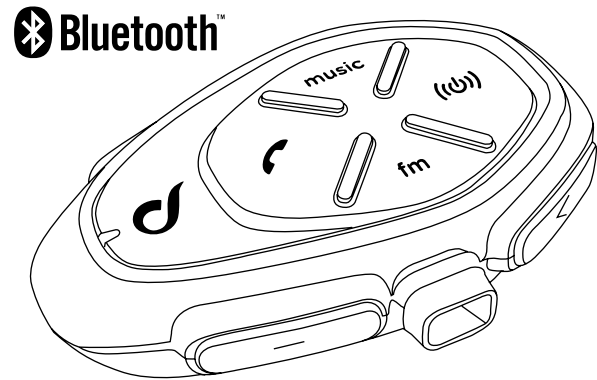




**TOUR  
SPORT  
LINK**



**QUICK GUIDE**

CHECK FOR SOFTWARE UPDATES ON WEBSITE  
[www.interphone.com](http://www.interphone.com)

**WARNING ON THE BATTERY OF THE PRODUCT**  
Fully charge the battery before using the product for the first time. Do not store the Product without charging it. Failure to do so may cause irreversible damage to the battery capacity. Charge the battery every TWO months.

**WARNING ON THE WATER RESISTANCE OF THE PRODUCT**  
The external unit (control unit), connected to the audio kit, is classified IP67 according to the IEC60529 standard. The control unit, connected to the audio kit, can therefore be immersed in a metre of fresh water for a maximum of 30 (thirty) minutes.

Despite this classification, the device is not immune to greater stress, such as prolonged immersions or high pressure water jets. Using the product during intense meteorological phenomena, at high speeds, may be equivalent to subjecting the product to a high pressure jet.

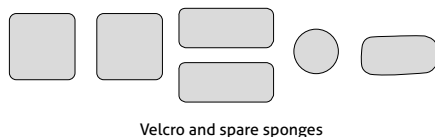
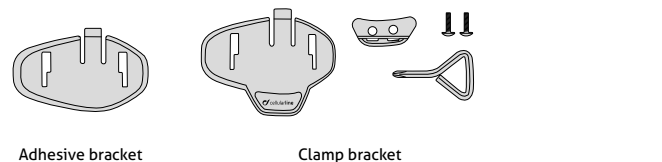
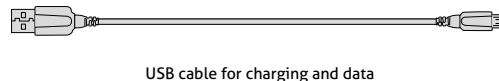
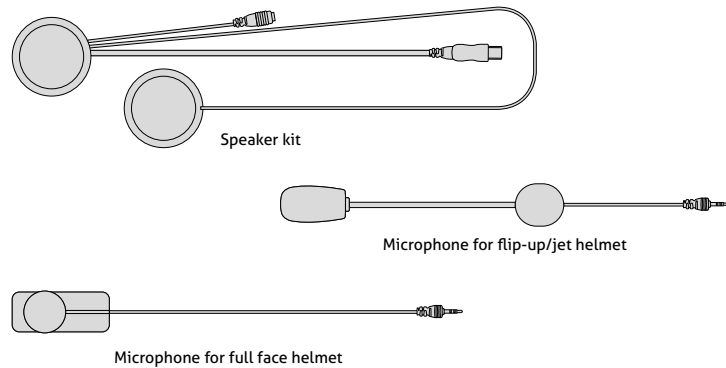
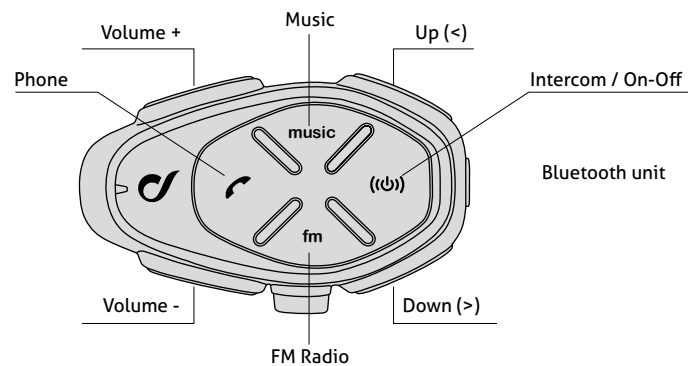
**FOLLOW ALL SUGGESTIONS CAREFULLY TO AVOID DAMAGING THE DEVICE:**  
Do not immerse the product in fresh water which is more than a metre deep for more than 30 minutes.

Do not store the product when still wet; dry it with a clean, soft cloth. Dry any water or moisture present in the connector of the control unit and/or audio kit with hot air for at least 10 minutes, so as to prevent the oxidation of the contacts.

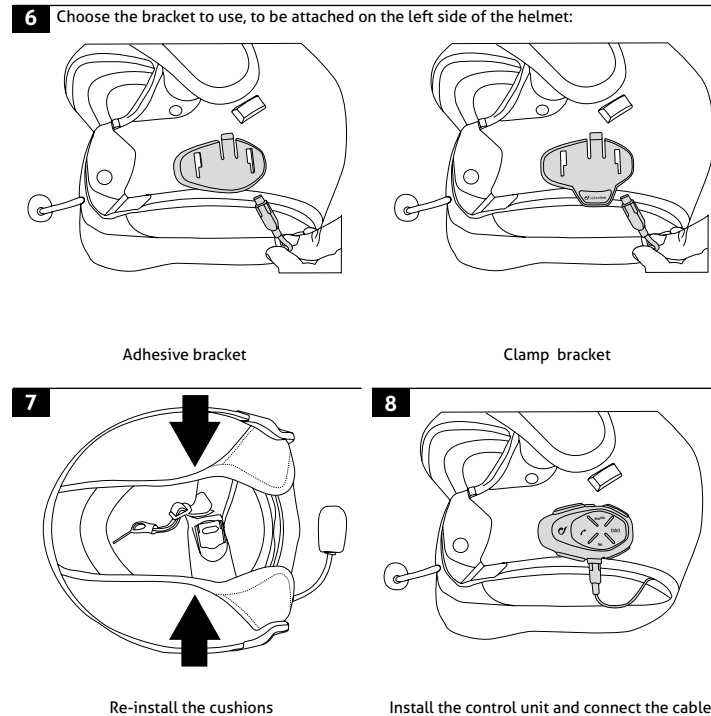
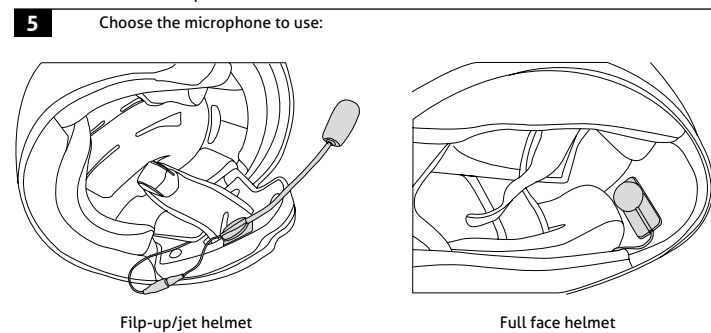
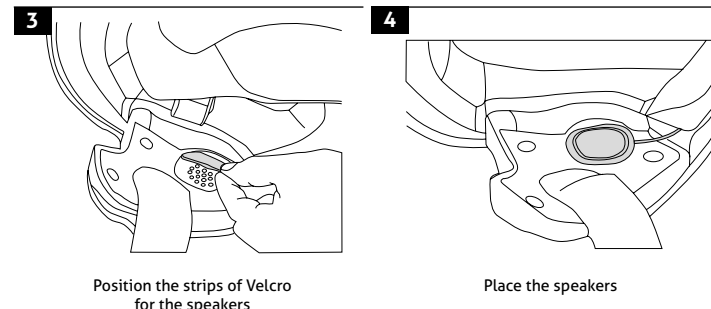
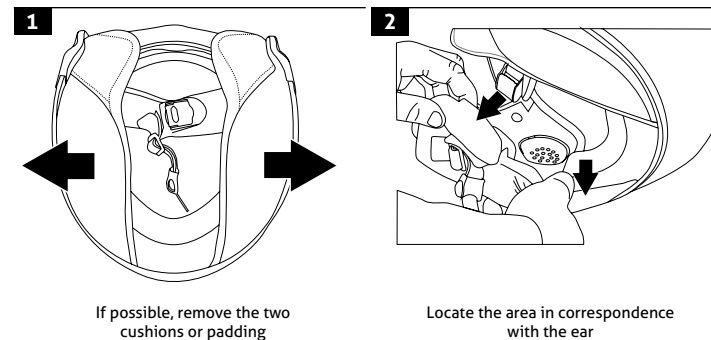
Do not expose the product to salt water or ionised water, drinks or other liquids. If the device is exposed to liquids other than fresh water, wash the device with cold fresh water and dry it carefully with a clean, soft cloth.

Do not expose the product to high pressure water jets. Make sure that the audio kit connector is completely inserted in the control unit. If not, complete protection against water and dust is not guaranteed.

**CHAPTER 1 – COMPOSITION OF THE KIT**

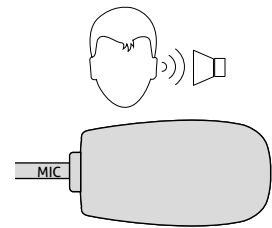


**CHAPTER 2 – INSTALLATION INSTRUCTIONS**



**(!) Warnings on installation:**

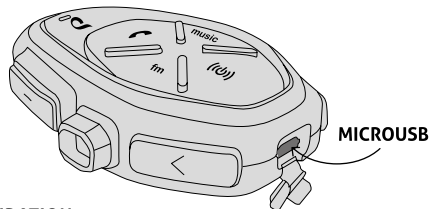
- The centre of the speakers must be placed in correspondence with the ears, as close as possible.
- The marking "MIC" on the microphone must be directed towards the mouth.



**CHAPTER 3 - BATTERY CHARGE**

Insert the micro USB charging cable in the special intercom connector, as shown in the picture. Connect the cable to a standard USB charger.

LED indications:  
- red LED: charging.  
- green LED: fully charged.

**CHAPTER 4 - BASIC CONFIGURATION****Turn the device on**

Press **(📞)** until the blue LED comes on.

**Turn the device off**

Press **(📞)** until the red LED lights up and the device turns off.

**Change the voice guide language**

1. With the unit on, press and hold **<** until the third beep. The LED will be purple.
2. Press **+** to select the desired language.
3. Press and hold **<** until the third beep to save the selection. The LED will flash blue.

**CHAPTER 5 - TELEPHONE / GPS****Pairing**

1. With the unit off, press and hold **(📞)** until the LED flashes red/blue alternately.
2. Start searching for new devices on the mobile phone / GPS
3. Select the intercom on the phone / GPS ("interphone tour", "interphone sport" or "interphone urban").
4. Once the pairing has been confirmed, the LED will flash BLUE twice, every three seconds.

**Answering a call**

Short press **(📞)**

**Voice dial**

Short press **(📞)**

**Redial last number**

Press **(📞)** until it beeps (1.5sec)

**CHAPTER 6 – MUSIC****Enable/disable playback from the phone**

Short press **(🎵)**

**Next track/Previous track**

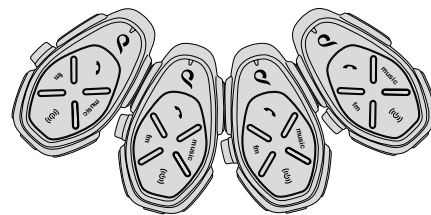
Short press **<** / **>**

**Share the music with another intercom**

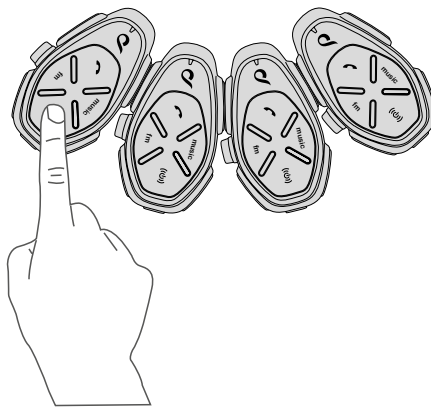
Press for 3 seconds **<** or **>**

**CHAPTER 7 – INTERCOM****Automatic pairing (only Interphone tour)**

1. Arrange the units (off and maximum 4) next to one another as shown in the picture.



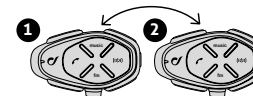
2. On the first unit, press **(📞)** until the LED flashes red/blue. The procedure will end automatically, by pairing all the units.

**Manual pairing**

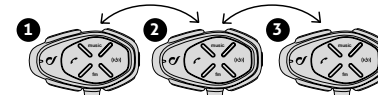
1. With the intercom off, on each unit, press and hold **(📞)** until the LED flashes red/blue.
2. Then press **(📞)** only on one of the two units.

**Conference between 2 users**

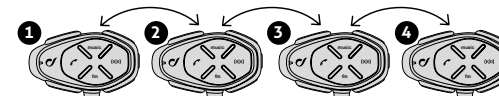
Press **(📞)** on unit 1 or on unit 2.

**Conference between 3 users**

1. For the first time only, pair unit 1 to 2 and then unit 2 to 3.
2. Press **(📞)** on unit 2 to start the conference between units 1, 2, 3.

**Conference between 4 users**

1. For the first time only, pair unit 1 to 2, then unit 2 to 3 and finally unit 3 to 4.
2. Press **(📞)** on unit 2 to start the conference between units 1, 2, 3.
3. Press **(📞)** on unit 4 to start the conference between units 1, 2, 3 with unit 4.

**CHAPTER 8 – FM RADIO****Enable/disable the FM radio**

Short press **fm**

**Scan frequency**

Short press **<** / **>**

**Save frequency**

Press **fm** until it beeps (1.5sec)

**Temporary storage of the 8 strongest stations**

Press **fm** until the second beep (3 sec)

Go to [www.interphone.com](http://www.interphone.com) for the complete user manuals.

**TECHNICAL CHARACTERISTICS**

<b>Bluetooth® compliance:</b>	Bluetooth® v. 4.2 - Class II
<b>Supported Bluetooth profiles:</b>	HFP A2DP AVRCP
<b>Frequency:</b>	2.402 – 2.480GHz
<b>Power:</b>	20dBm EIRP
<b>Operating temperature:</b>	0 - 45°C
<b>Charging temperature:</b>	5 - 45°C
<b>Dimensions mm:</b>	55x85x25
<b>Weight:</b>	68 g
<b>Capacity:</b>	Up to 10 meters
<b>Talk time:</b>	20-12 h
<b>Stand-by time:</b>	1000 h
<b>Charging time:</b>	1,5 - 2 h
<b>Battery type:</b>	Lithium-ion rechargeable

SAR is measured with the device at 0 mm to the body, while transmitting at the highest certified output power level in all frequency bands of the device. The maximum SAR value is 1.75 W/kg (head/body) averaged over 10 gram of tissue.



WARNING: To prevent possible hearing damage, do not listen at high volume levels for long periods.

**Federal Communications Commission (FCC) Statement****Industry Canada (IC) Statement**

15.21 You are cautioned that changes or modifications not expressly approved by the part responsible for compliance could void the user's authority to operate the equipment.

15.105(b) This equipment has been tested and found to comply with the limits for a Class B digital device, pursuant to part 15 of the FCC/IC rules. These limits are designed to provide reasonable protection against harmful interference in a residential installation. This equipment generates, uses and can radiate radio frequency energy and, if not installed and used in accordance with the instructions, may cause harmful interference to radio communications. However, there is no guarantee that interference will not occur in a particular installation. If this equipment does cause harmful interference to radio or television reception, which can be determined by turning the equipment off and on, the user is encouraged to try to correct the interference by one or more of the following measures:

- Reorient or relocate the receiving antenna.
- Increase the separation between the equipment and receiver.
- Connect the equipment into an outlet on a circuit different from that to which the receiver is connected.
- Consult the dealer or an experienced radio/TV technician for help.

This device complies with part 15 of the FCC rules and Industry Canada licence-exempt RSS standard(s)

Operation is subject to the following two conditions:

- 1) This device may not cause interference and
- 2) This device must accept any interference, including interference that may cause undesired operation of the device.

FCC/IC RF Radiation Exposure Statement:

This equipment complies with FCC/IC radiation exposure limits set forth for an uncontrolled environment. End users must follow the specific operating instructions for satisfying RF exposure compliance. This transmitter must not be co-located or operating in conjunction with any other antenna or transmitter.



EN - Hereby, Cellular Italia S.p.A declares that the radio equipment type BT16 (Interphone Tour, Sport and Link) is in compliance with Directive 2014/53/EU and Directive RoHS (2011/65/EU). The user is prohibited from making any type of change or variation to the device. Variations or changes not expressly approved by Cellular Italia S.p.A will cancel the user's authorisation to use the device. Only update with software provided by Cellular Italia S.p.A. Bluetooth® is a trademark owned by Bluetooth SIG, Inc. The full text of the EU declaration of conformity is available at the following internet address: [www.cellularline.com/it\\_it/dichiarazione-conformita/](http://www.cellularline.com/it_it/dichiarazione-conformita/)

EN - INSTRUCTIONS FOR THE DISPOSAL OF APPLIANCES FOR DOMESTIC USERS (Applicable in countries in the European Union and those with separate waste collection systems)

This mark on the product or documentation indicates that this product must not be disposed of with other household waste at the end of its life. To avoid any damage to health or the environment due to improper disposal of waste, the user must separate this product from other types of waste and recycle it in a responsible manner to promote the sustainable re-use of the material resources.

Domestic users should contact the dealer where they purchased the product or the local government office for all the information regarding separate waste collection and recycling for this type of product. Corporate users should contact the supplier and verify the terms and conditions in the purchase contract. This product must not be mixed with other commercial waste.

This product has a battery that cannot be replaced by the user. Do not attempt to open the device to remove the battery as this could cause malfunctions and seriously damage the product. When disposing of the product, please contact the local waste disposal authority to remove the battery. The battery inside the device was designed to be able to be used during the entire life cycle of the product